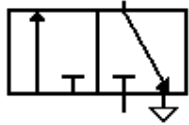


VÁLVULAS DIRECIONAIS

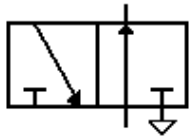
2/2 vias



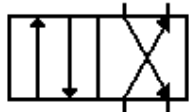
3/2 vias NF



3/2 vias NA



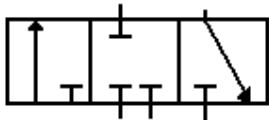
4/2 vias



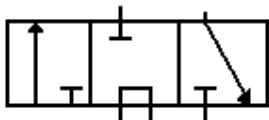
5/2 vias



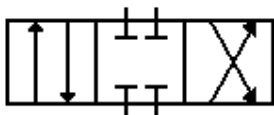
3/3 vias- centro fechado



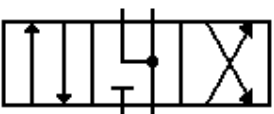
3/3 vias- centro aberto



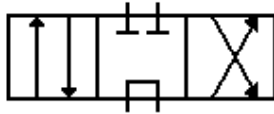
4/3 vias – centro fechado



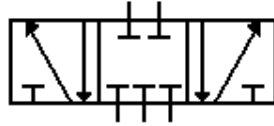
4/3 vias – centro aberto do atuador para exaustão



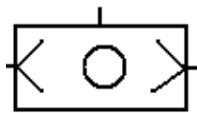
4/3 vias – centro aberto para a bomba



5/3 vias – centro fechado



VÁLVULA OU

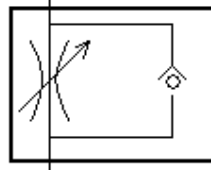


VÁLVULA E

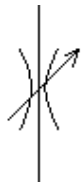


VÁLVULA REGULADORA DE FLUXO:

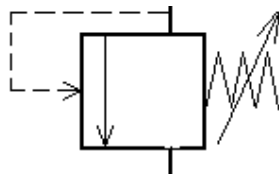
-Unidirecional



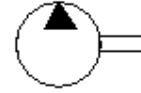
Bidirecional



VÁLVULA LIMITADORA/ REGULADORA DE PRESSÃO



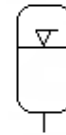
BOMBA HIDRÁULICA



TOMADA PNEUMÁTICA

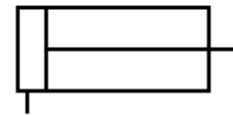


ACUMULADOR HIDRÁULICO

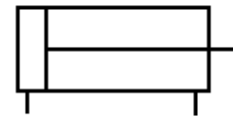


ATUADORES

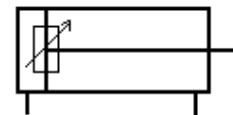
Cilindro – Simples Ação



Cilindro- dupla ação



Cilindro – dupla Ação com amortecimento de fim de curso



RESERVATÓRIO HIDRÁULICO

