

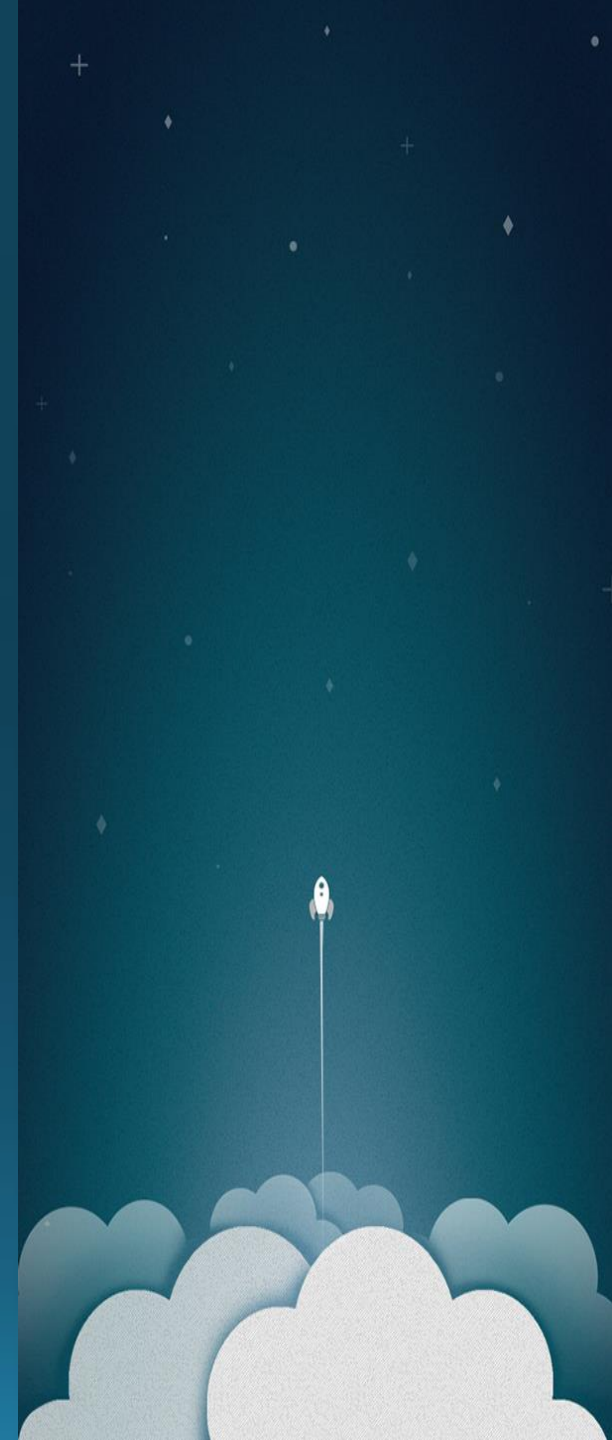
# APLICATIVO COMPUTACIONAL PARA CÁLCULO DO COEFICIENTE DE ARRASTO DE MINIFOGUETES

CD 1.0

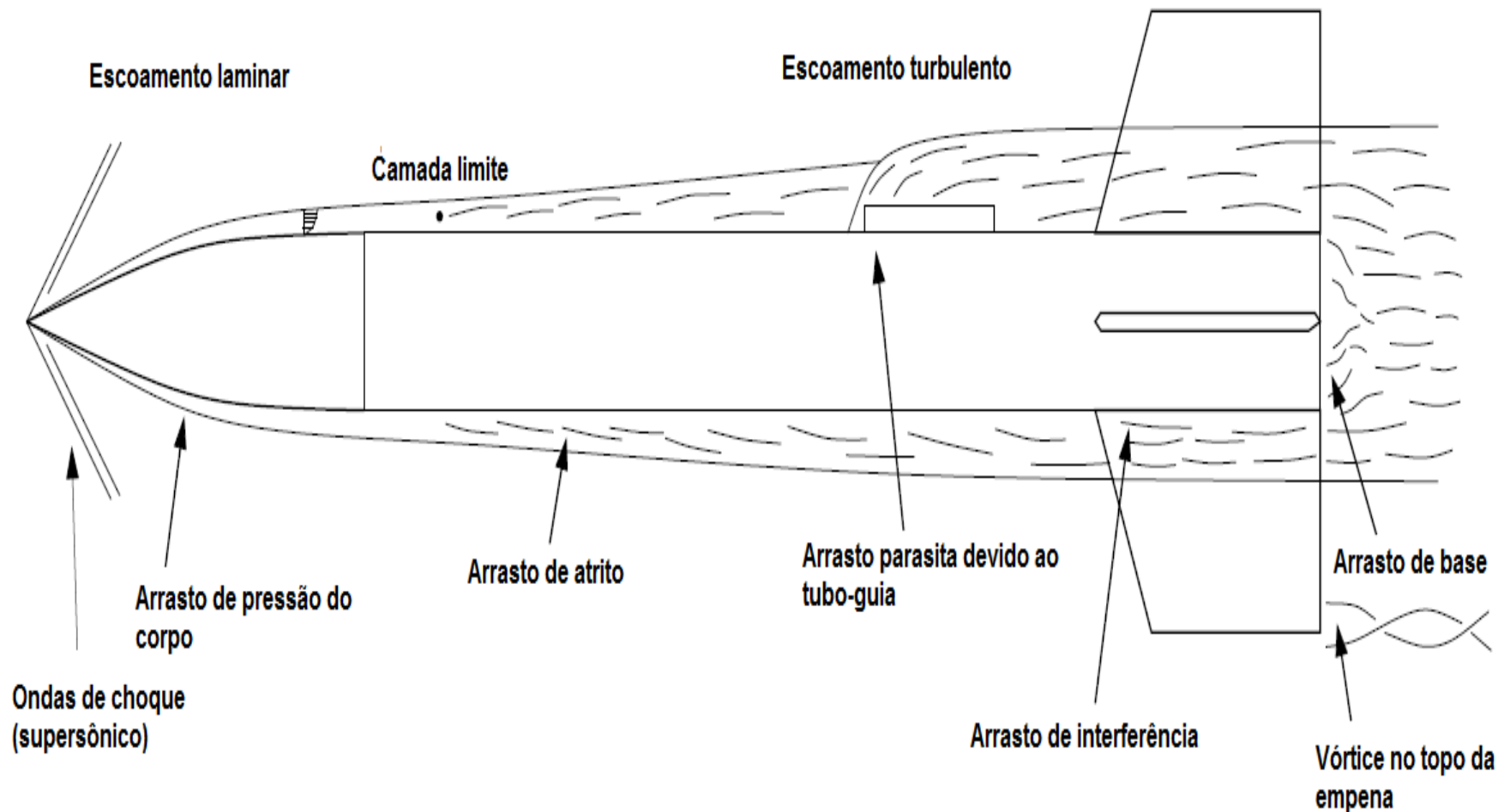
TOBIAS PINHEIRO QUELUZ

# INTRODUÇÃO

- A determinação teórica do coeficiente de arrasto não apresenta um modelo matemático padrão definido.
- Os programas computacionais existentes subestimam os valores de  $C_d$ .
- O método de obtenção do coeficiente não é divulgado ou apresentado de forma clara.



# COEFICIENTE DE ARRASTO

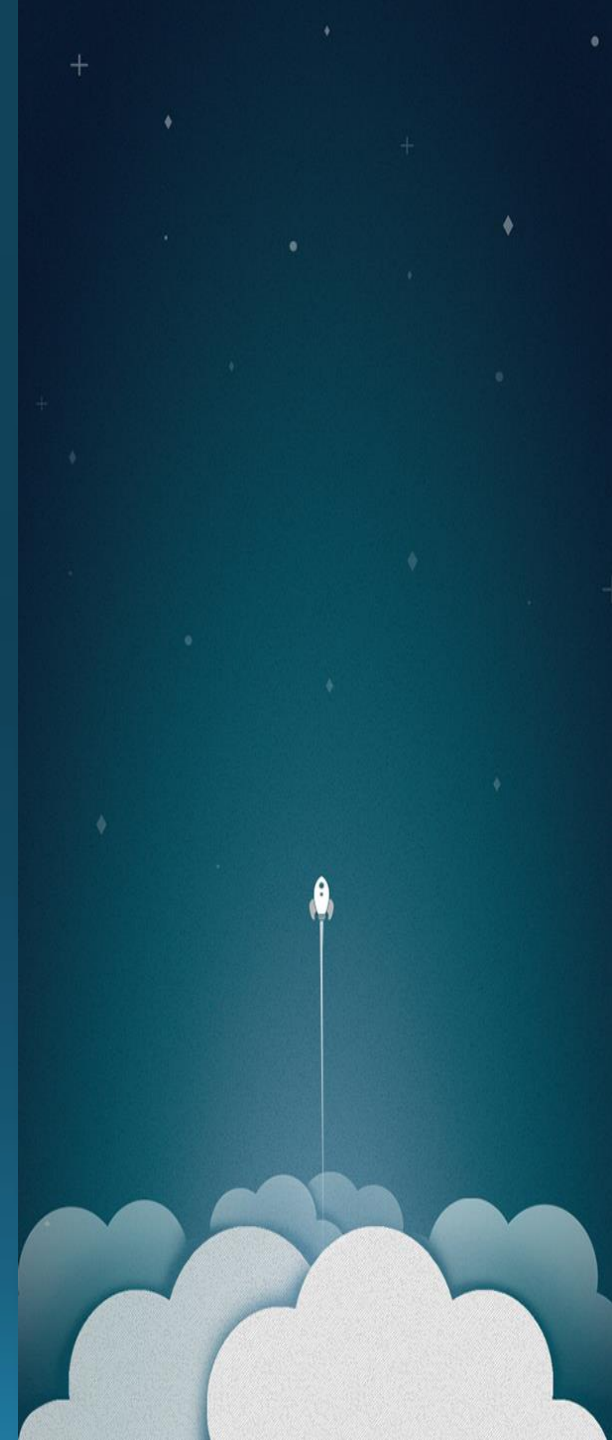


$$C_d = \frac{2D}{\rho V^2 A}$$



# CD<sub>1P0</sub>

- Linguagem Fortran 90
- Calcula o coeficiente de arrasto de espaçomodelos em escoamento subsônico
- Os narizes podem apresentar formato cônico, ogiva, elíptico ou parabólico.
- As empenas são trapezoidais e suas bordas podem ter um perfil arredondado ou quadrado.
- O efeito do tubo-guia e do escoamento de gases sobre o arrasto podem ser considerados.
- O ângulo de ataque de  $0^\circ$ .



# MODELO MATEMÁTICO

- *Coeficiente de arrasto de atrito ( $Cd_a$ ) – Hoult (2013)*
- *Coeficiente de arrasto de base ( $Cd_b$ ), de pressão ( $Cd_p$ ) e parasita ( $Cd_{pa}$ ) – Niskanen (2013)*
- *Coeficiente de arrasto de interferência ( $Cd_i$ ) – Cannon (2004)*



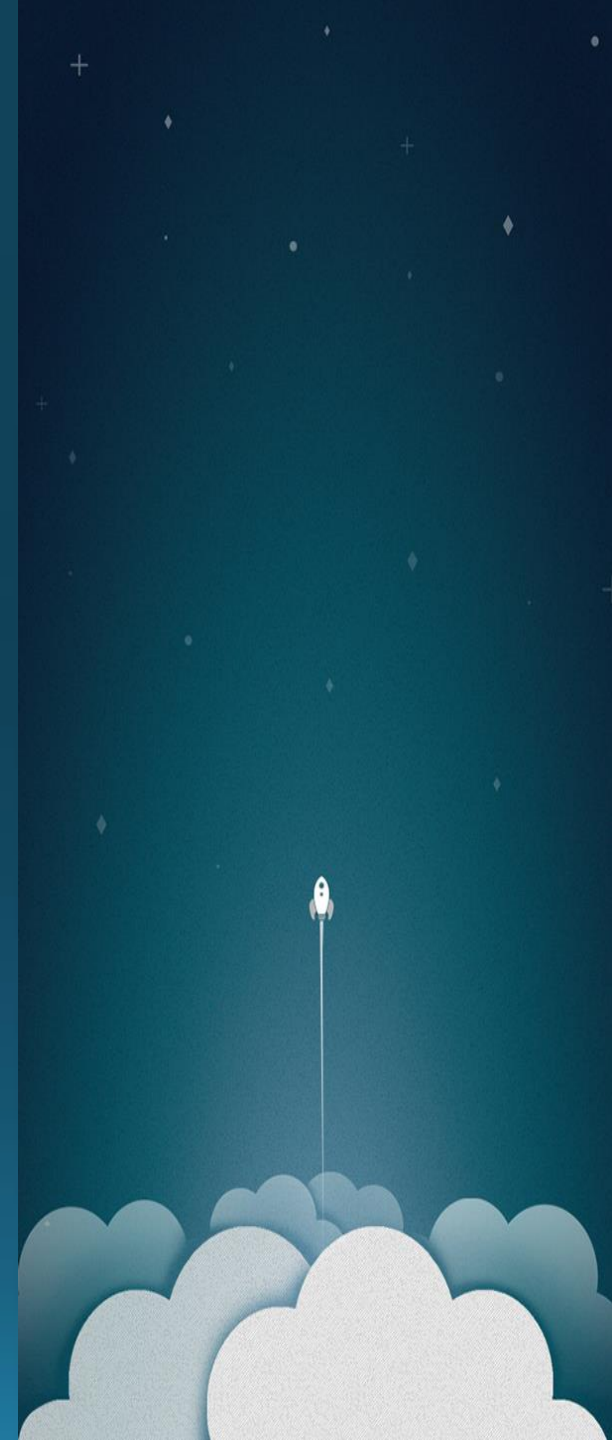
# CD DE ATRITO

$$C_{d\text{componente}} = \frac{C_f S_{wet} C}{S_{ref}}$$

$$C_f = \left( \frac{1.38}{\sqrt{Re_t}} \right) \cdot \frac{S_{wetl}}{S_{wet}} + \left( \frac{0.471}{(\log(Re_t) - 0.407)^{2.64}} \right) \cdot \left( 1 - \frac{S_{wetl}}{S_{wet}} \right)$$

$$C = 1 - 0.09M^2$$

$$Re = \frac{V\rho l}{\mu}; \quad M = \frac{V}{340}$$





# CD DE BASE

$$C_{d_{btubo-foguete}} = (0.12 - 0.13M^2) \cdot \frac{S_b}{S_{ref}}$$

$$C_{d_{bempenas}} = (0.5 \text{ ou } 1.0) \cdot C_{d_{btubo-foguete}}$$



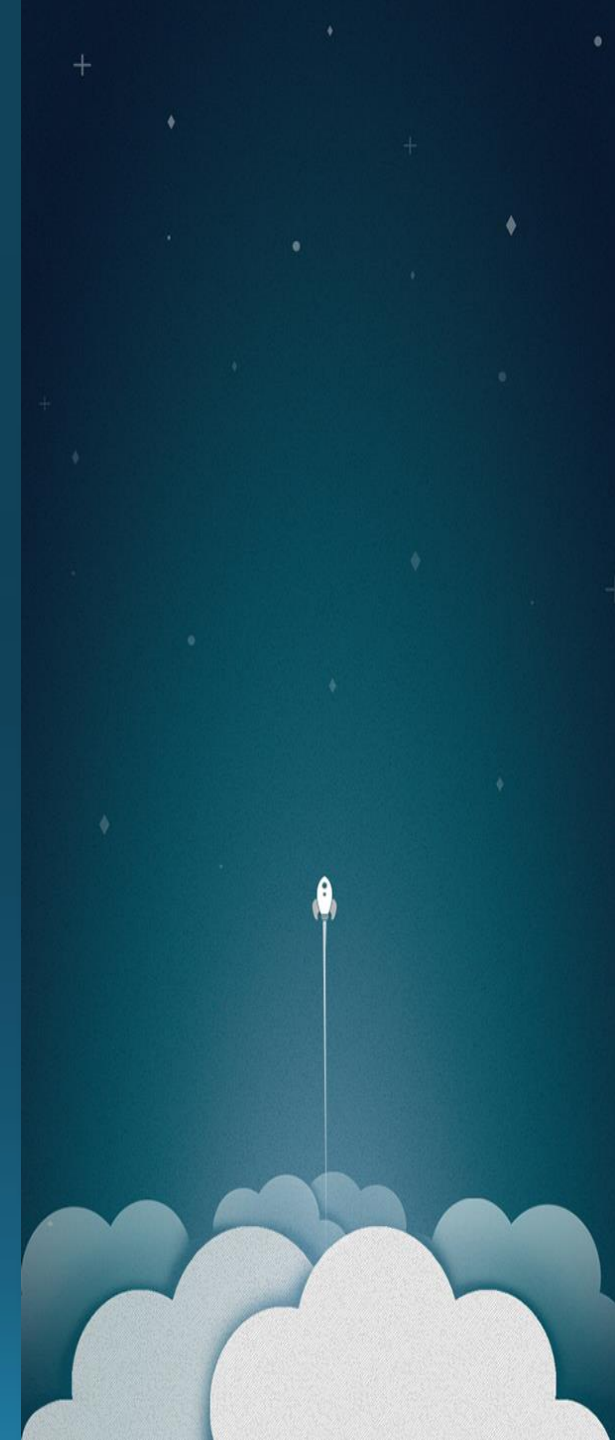
# CD DE PRESSÃO

$$C_{d_{pnariz}} = 0.8(\sin\phi)^2 \cdot \frac{S_{wet}}{S_{ref}}$$

$$C_{d_{pempenas}} = [(1 - M^2)^{-0.417} - 1] \cdot (\cos\tau)^2 \cdot \left(\frac{S_{wet}}{S_{ref}}\right) \text{ (quadrado)}$$

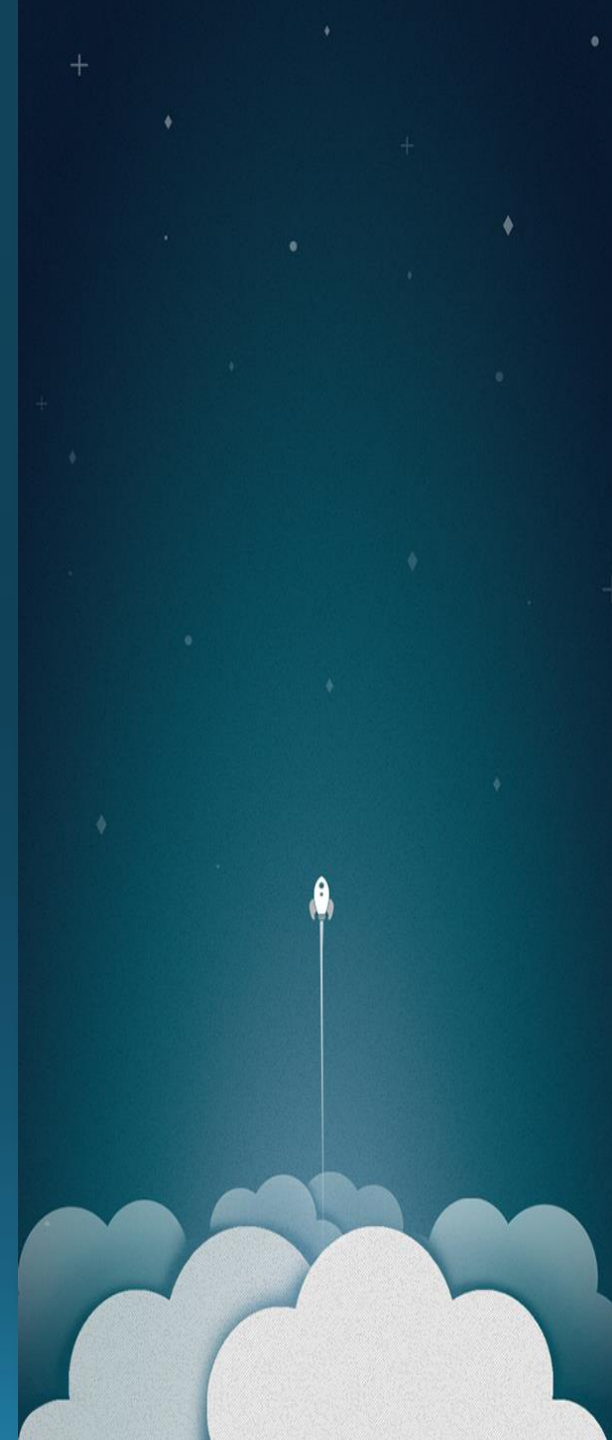
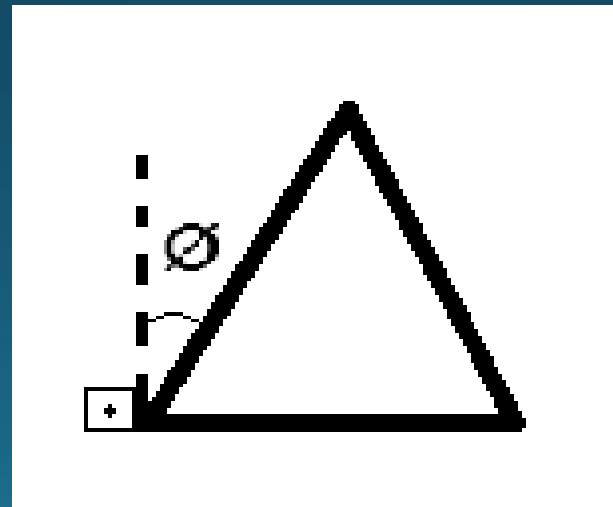
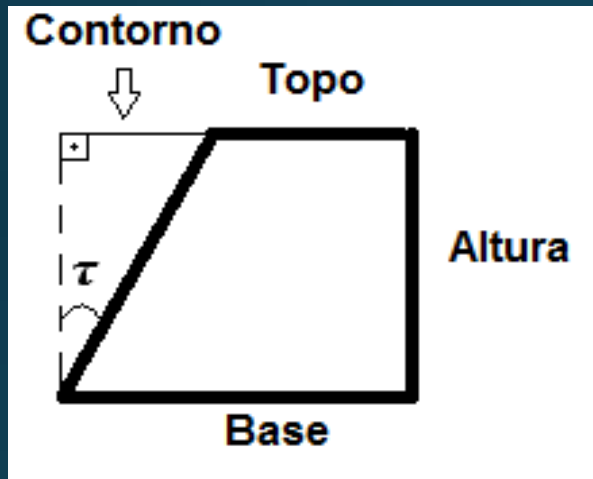
$$C_{d_{pempenas}} = 0.85 \cdot \left[1 + \frac{M^2}{4} + \frac{M^4}{40}\right] \cdot (\cos\tau)^2 \cdot \left(\frac{S_{wet}}{S_{ref}}\right)$$

(arredondado)





# CD DE PRESSÃO



# CD DE INTERFERÊNCIA

$$Cd_i = C_{fe} \cdot \frac{D_c R_c N}{S_{ref}} \cdot \left( 1 + 2 \cdot \frac{e}{\bar{c}} \right)$$



# CD PARASITA

$$Cd_{pa} = \left[ 0.85 \left( 1 + \frac{M^2}{4} + \frac{M^4}{40} \right) \cdot \max(A, 1) \right] \cdot (St_e - St_i \cdot \max(B, 0))$$

$$A = 1.3 - 0.3 \cdot \left( \frac{Ltb}{Detb} \right); \quad B = 1.0 - \left( \frac{Ltb}{Detb} \right)$$



# CD TOTAL

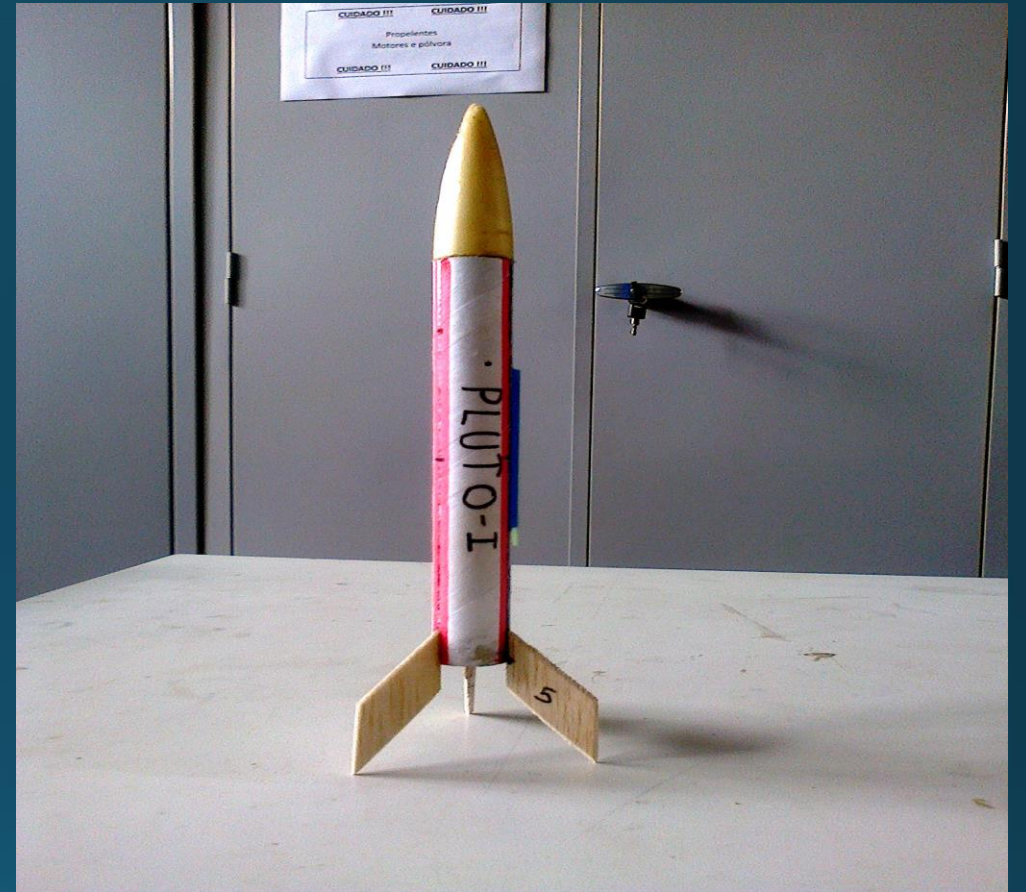
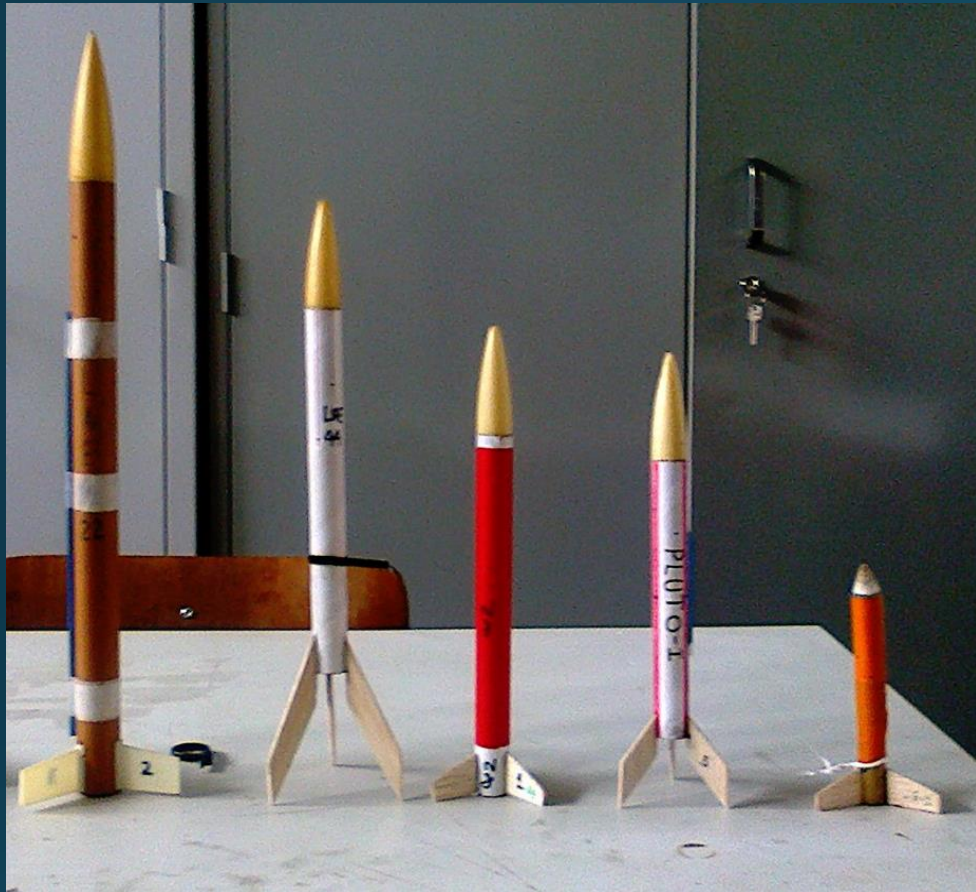
$$Cd = (Cd_a + Cd_b + Cd_p + Cd_i + Cd_{pa})1.05$$



# REFERÊNCIAS

- CANNON, B. **Model Rocket Simulation with Drag Analysis**, 2004.
- DEMAR, J.S. **Model Rocket Drag Analysis using a Computerized Wind Tunnel**. NAR research & development report 52094, 1995.
- GREGOREK, G. M. **Aerodynamic Drag of Model Rockets** . Penrose: Estes Industries, 1970.
- HOERNER, S.F. **Fluid-Dynamic Drag**: theoretical, experimental and statistical information. Publicado pelo autor, 1965.
- HOULT, C.P. **Drag Coefficient (rev.3.2)**. Rocket Science and Technology, 2013.
- NISKANEN, S. **OpenRocket technical documentation**. 2013.
- ROGERS, C.E; COOPER, D. **Rogers Aeroscience RASero Aerodynamic Analysis and Flight Simulation Program: Users Manual**. RASAero, 2011.
- STONEY JR, W.K. **Collection of zero-lift drag data on bodies of revolution from free-flight investigations**. NASA technical report R-100, 1961.





OBRIGADO!