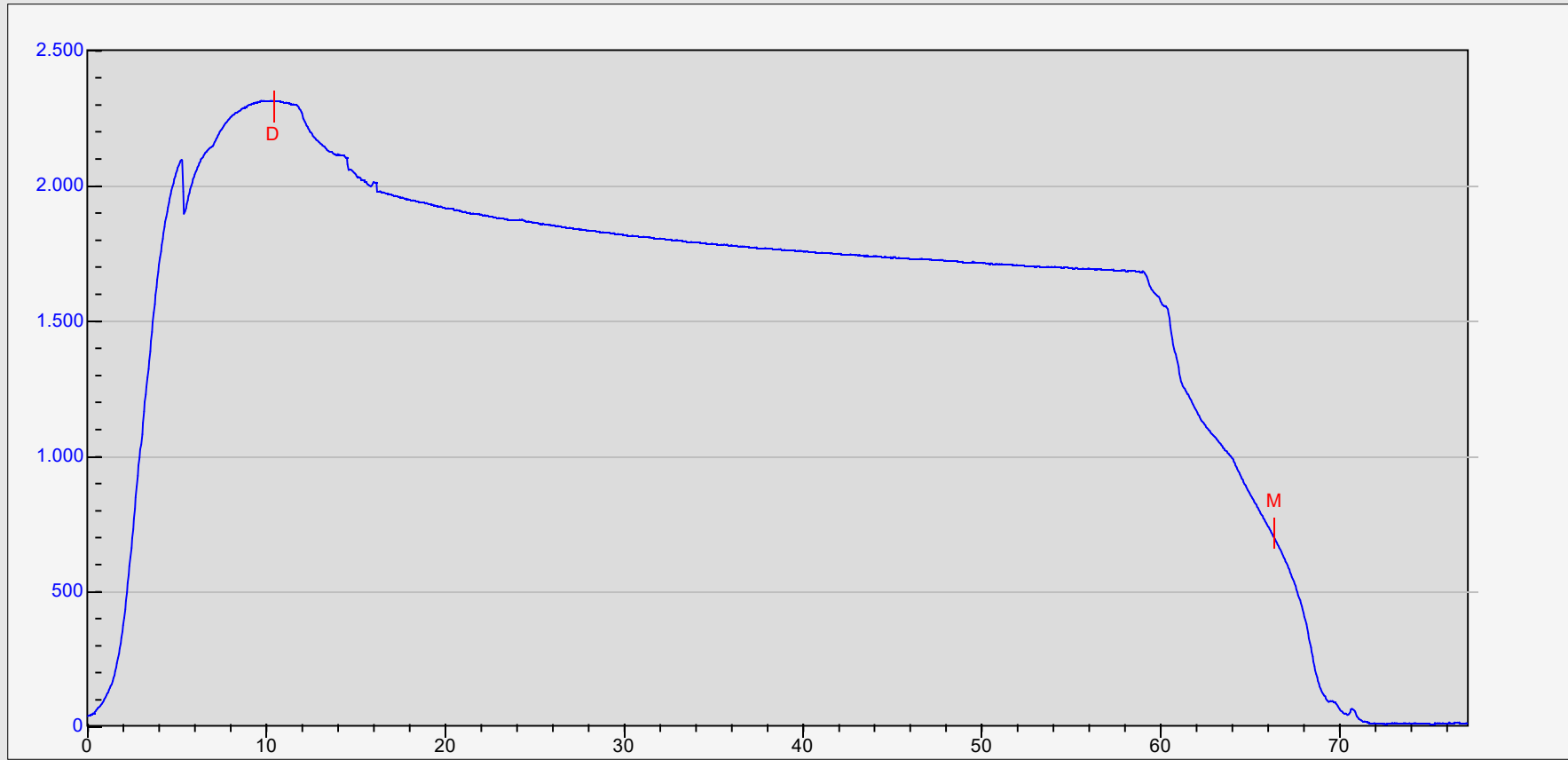


Untitled Altitude vs. Time



Statistics:

Apogee Alt.: 2315' AGL
Ground Elev.: 2653' MSL
NumSamps: 1544
Main Deploy: 701' AGL
Apogee Delay: 0 SEC
FlightNum: 6

Displayed

- Raw Altitude
- Smoothed Alt
- Velocity
- Temperature
- Voltage

Comments

Model: SL100 Serial #: 3046